



Prim

Industrieservice GmbH



SPECIALIZE AERIAL PLATFORM RESCUE VEHICLE

ALP40-PR



HYDRAULIC PLATFORM

Hydraulic platforms allow firefighting teams to access the fire scene and facilitate their work in high-rise buildings, industrial facilities and other harsh conditions. These vehicles can reach buildings up to 40 meters high and can be used effectively in firefighting operations.

All rotation and crane movements shall be electro-hydraulic controlled by proportional valves. Thanks to the proportional principle, the control function is not affected by changes in ambient or oil temperature, thus providing smooth, safe and very precise movement even in most conditions harsh operation. All control movements can be performed by the remote control system and from both control panels.

| | |
|---|--------------------------|
| Telescopic lift | 3 segments |
| Maximum working height | 40 meters |
| Maximum working load of the ladder basket | 400 kg |
| Ladder out speed | 170 -175 seconds |
| Ladder retracting speed | 175 -180 seconds |
| Hydraulic outriggers | 2 pairs of H-shaped legs |





FEATURE

- Integrated safety interlock for the boom system when working
- The system automatically manages the movement of the auxiliary boom
- 360° platform on bearing turntable and geared motor with negative hydraulic brake
- Equipped with a wired remote controller
- Control the lift at ground level and at the basket with the integrated multi-function screen



SAFETY SYSTEM

- There is an anti-collision device in the cabin
- The device automatically balances the ladder basket and boom
- Automatic stable tangential speed management system
- Automatically returns to position when moving
- Equipped with a load sensing device for the ladder basket

LADDER BASKET

- Integrate internal communication equipment on the control station
- Control the start/stop of the motor from the ladder basket and the ground
- Hydraulically controlled folding and opening ladder basket system
- The ladder basket can rotate left and right 90°
- Automatically delineate working range (180°)
- The ladder can be operated when the outriggers are not extended (narrow jack).
- Auxiliary backup power and hydraulic power unit, powered by truck battery

CHASSIS

CHASSIS

| | |
|----------------------------|--|
| ▪ Chassis | IVECO |
| ▪ Model | ML180E28 |
| ▪ Driven wheel | 4x2 |
| ▪ Emission standards | EURO 5 |
| ▪ Engine | Diesel |
| Power | 205 kW @ 2.500 rpm |
| Torque | 950 Nm @ 1.250 rpm |
| ▪ Gearbox | Manual, 6 forward gears and 1 reverse gear |
| ▪ Brakes | Pneumatic brakes, 2 independent circuits, equipped with ABS system |
| ▪ Dimension | |
| Base vehicle size (LxWxH) | 8.124 x 2.470 x 2.841 mm |
| Overall dimensions (LxWxH) | 8.859 x 2.500 x 3.747 mm |
| Wheelbase | 4.815 mm |
| ▪ Max. Load | 18.000 kg |
| Front | 7.100 kg |
| Rear | 11.500 kg |
| Ground clearance, front | 235 mm |
| Ground clearance, rear | 232 mm |
| Minimum turning radius | 8.300 mm |
| Break- Over angle | 30% |
| Approach Angle | 25° |
| Departure Angle | 19° |
| Maximum movement speed | 90 km/h |
| Tire size | 295/80R22.5 (Or equivalent) |
| Tires | Front 2 tires, Rear 4 tires, 1 spare tire |



ACCOMPANYING EQUIPMENT

COMBI TOOL



| | |
|---------------------------------------|--------------------|
| Model | SPS 370 MK2 |
| Manufacturer | Weber Rescue |
| Spreading width | 370 mm |
| Spreading force (in the working area) | 35 - 783 kN |
| Opening width | 295 mm |
| Pulling width | 405 mm |
| Max. pulling force | 57 kN |
| Weight | 19,2 kg |
| Handle | Rotate 360° |
| Dimensions (LxWxH) | 933 x 236 x 241 mm |
| Nominal pressure | 700 bar |
| En classification (EN 13204) | CK35/370H-19.2 |
| En cutting class (EN 13204) | 1I-2J-3H-4J-5I |
| NFPA cutting class (NFPA 1936) | A7-B8-C7-D8-E8-F5 |

CHAINSAWS



| | |
|------------------------------------|----------------------|
| Model | 353 |
| Manufacturer | Husqvarna |
| Engine | Gasonline |
| Cylinder displacement | 51,7 cm ³ |
| Power output | 2,4 kW |
| Maximum loaded speed | 9.000 rpm |
| Maximum engine speed | 13.000 rpm |
| Max. torque | 2,7 Nm @ 6.600 rpm |
| Fuel tank | 0,5 l |
| Fuel consumption | 531 g/kWh |
| Electromagnetic induction plug gap | 0,5 mm |
| Oil tank | 0,28 l |
| Type of oil pump | Automatic |
| Pump oil flow | 5 - 12 ml/m |
| Recommended bar length, min-max | 33 - 50 cm |
| Chain speed at max power | 17,3 m/s |
| Weight (Blade not included) | 5 kg |



ACTIVE AIR FILTRATION™

The centrifugal force created by the rotating cooling fan separates 93% of the airborne dust particles and dirt from the intake air, thereby enabling longer service intervals for the air filter.



SMARTCARB™

The SmartCarb™ has built-in automatic filter compensation to provide easier starts, continuous engine power and low fuel consumption.

DIGITAL IGNITION

The digital ignition allows the ignition timing to be optimized for each rpm, enabling easy starts as well as efficient workload combustion.

X-TORQ® ENGINE TECHNOLOGY

X-Torq® reduces fuel consumption and harmful emissions by using fresh air instead of air/fuel mix to evacuate the exhausts. By making efficient use of the fuel it also delivers a massive bottomend torque across a wide RPM range.

DURASTARTER™

The DuraStarter™ is designed and tested to be virtually maintenance free, equipped with a aramid-reinforced starter cord and a dust-sealed cord housing.

CONCRETE CUTTERS

Specifications

| | |
|-------------------------|-----------------------|
| Model | K770 |
| Manufacturer | Husqvarna |
| Engine | Gasonline, 1 cylinder |
| Idle rpm | 2.700 rpm |
| Maximum idle rpm | 3.500 rpm |
| Maximum load rpm | 9.000 l/min |
| Power/weight ratio | 0,33 kW/kg |
| Vibration | 2,3 m/ s ² |
| Output power | 3,7 kW |
| Maximum output shaft | 4.700 rpm |
| Shaft diameter | 20 mm |
| Largest blade diameter | 300 mm |
| Blade flange diameter | 105 mm |
| Maximum blade thickness | 5 mm |
| Engine cylinder shaft | 51 mm |
| Displacement | 73,5 cm ³ |
| Stroke | 36 mm |
| Electronic touch gap | 0,5 mm |
| Starter System | Recoil & electric |
| Engine cooling | Fan/ air |
| Fuel consumption | 470 g/kWh |
| Fuel tank | 0,9 l |
| Dimensions (H x D x W) | 391 x 618 x 221 mm |
| Weight | 10 kg |



ACCOMPANYING EQUIPMENT

GAS POWERED JACKHAMMER



| | |
|---|---------------------------------------|
| Model | GPJ-52 |
| Manufacturer | HUMBOLDT |
| Overall Size (without Pile Head)(L x W x H) | 650 x 380 x 285 mm |
| Point Chisel Size (Dia.xH) | 30 x 400 mm |
| Flat Chisel Size (Dia.xH) | 30 x 400 mm |
| Displacement | 51,7 cc |
| Impact Frequency | 1500 BPM |
| Impact Energy | 20 to 55J |
| Max. Power | 1300W |
| Max. rpm | 7000 rpm |
| Max. Torque | 3,5 Nm @ 5000 rpm |
| Engine type | 2 stroke, single cylinder, air cooled |
| Fuel Tank Capacity | 1 l |
| Fuel Consumption Rate | 450 g/kWh |
| Starter System | Recoil |
| Material | Metal, PP |
| Net Weight | 16,15 kg |

Advantage

Gasoline hammer with point chisel & flat chisel for different drilling works and demolition projects

2-stroke motor uses mixing oil with 30: 1 mix ratio for power; machine features EPA certification
Hand pull start system for offering high flexibility and easy operation, no need to use electricity
Sturdy metal construction for providing long life and cool vents for providing good heat dissipation

Components 1 set includes

- + 1x Demolition Hammer
- + 1x Point Chisel
- + 1x Flat Chisel
- + 1x Toolkit (according to manufacturer standards)
- + 1x Oil Can
- + 1x Wrench
- + 1x Funnel
- + 1 Pair of Gloves
- + 1 Pair of Glasses
- + 1x Manual



30 METER RESCUE ROPE WITH CARABINER HOOK



Specifications

| | |
|---------------------------------------|---|
| Manufacturer | PRIM Industrieservice GmbH |
| Model | PTR-30 |
| Coil | The outer shell is made of Dupont silk, inside the core there are 6 steel wires linked together |
| Hook | There is a heavy-duty carabiner with 2 wire ends and screws |
| Wire diameter | 12 mm |
| Steel core diameter | 4 mm |
| Length | 30 meters |
| Max. load | 150 kg |
| Resistant to traction | 700 kg |
| Time exposed to open flame | 2 - 7 seconds |
| Withstands maximum temperature | 500°C |

LADDER



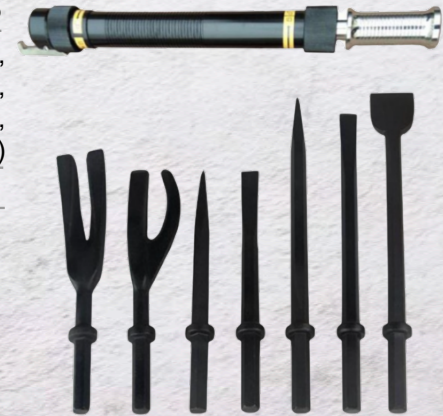
Specifications

| | |
|----------------------------|------------------------------|
| Manufacturer | PRIM Industrieservice GmbH |
| Model | LADER 30 |
| Ladder type | Folding ladder |
| Material | Aluminum steps, steel cables |
| Ladder load | 3 kN |
| Load of each step | 1,5 kN |
| Step width | 330 mm |
| Width inside ladder | 315 mm |
| Distance of stairs | 303 mm |
| Length | 16 meters |
| Weight | 8,3 kg |
| Dimension folded | 330 x 270 x 100 mm |

HAND HAND DEMOLITION KIT

Specifications

| | |
|---------------------|--|
| Manufacturer | PRIM Industrieservice GmbH |
| Model | HDK-15 |
| Kit included | Multi-purpose demolition bar, cracking pliers, 3 inch chisel, 1 inch chisel, pointed chisel, cutter and storage bag (1 each) |
| Dimension | 80 cm |
| Weight | 13,2 kg |



ESCAPE CHUTE

Specifications

| | |
|---|--|
| Manufacturer | Global Safe Corporation |
| Model | Sloping Escape Chute |
| Feature | Supports rapid evacuation of people from high-rise buildings (up to 375 people in 15 to 20 minutes) |
| Type | 45° inclined slope |
| Material | Polyester fiber, 0.4 mm thick. At the bottom of the tube there is a cushion to avoid injury and collision for the user |
| Entrance size (Outer dimensions)(Height x Width) | 750 x 700 mm |
| Internal Dimensions (Height x Width) | 650 x 600 mm |

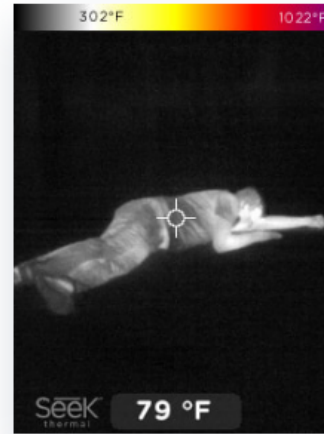


THERMAL CAMERA



Specifications

| Model | FirePRO X |
|-------------------------|--|
| Manufacturer | SEEK Thermal |
| Thermal Sensor | 320 x 240 pixel |
| Detection Distance | To 1.800 feet |
| Field of View | Wide, 32° FOV |
| Temperature Range | -20° - 550°C |
| Operating Temp | -20° - 60°C |
| Operating Temp (10 min) | -20° - 85°C |
| Operating Temp (2 min) | -20° - 107°C |
| IP Rating | IP67 |
| Flashlight | 300 Lumen LED |
| Display | 2.4" Color |
| Thermal Sensitivity | < 70 mK |
| Temp. Display Scale | Fahrenheit or Celsius |
| Storage Media | 4GB Internal (>4,000 images) |
| Color Filters | Fire (fire detection mode) Survey (survey mode determines the location of victims during the search process) Color (training mode) |



Faster Primary Search
Quickly locate victims and hot spots when every second counts



Self Rescue
Find your way out in zero visibility conditions, reducing mayday calls



Reduce Rekindles
Conduct overhaul with confidence to ensure the fire is completely extinguished



First Responder & Inspection
Assess the scene for heat-related clues such as: faulty ballasts and vehicle ejections

ACCOMPANYING EQUIPMENT



MULTI- GAS DETECTOR

The Dräger X-am® 5000 belongs to a generation of gas detectors, specifically developed for personal monitoring applications. This 1 to 5 gas detector reliably measures flammable gases and vapors as well as oxygen and harmful concentrations of toxic gases, organic vapors, Odorants and Amines. Our products are manufactured according to ATEX, IECEX, CSA (Canada & USA), CE, MED, MSHA standards

Specifications

| | | |
|---|--|-----------------------------|
| Model | X-AM 5000 | |
| Manufacturer | Dräger | |
| The device can accurately detect types | CO | 0 - 2000 ppm |
| | CO2 | 0 - 100 ppm |
| | NO2 | 0 - 50 ppm |
| | SO2 | 0 - 100 ppm |
| Ability to measure O2 gas concentration | 0 - 25% | |
| Dimensions (W x D x H) | 48 x 130 x 44 mm | |
| Weight | 220 – 250 g | |
| Ambient conditions | Temperature | -20 to +50 °C |
| | Pressure | 700 to 1300 mbar |
| | Relative humidity | 10 to 95 % |
| Protection class | IP 67 | |
| Alarms | Visual | 360° |
| | Audible | Multi-tone > 90 dB at 30 cm |
| Operating times | > 12 hours with Alkaline and NiMH | |
| | > 13 hours with NiMH HC | |
| | > 40 hours when using the Save Energy Mode | |
| Charging time | < 4h | |
| Operating voltage | 12 VDC | |
| Datalogger | Can be read out via Infrared > 1,000 hours with 4 gases and a recording interval of 1 value per minute | |
| Pump operation | Maximum hose length 45 m (148 ft) | |
| Screen | Displays all instance values at once | |

DIFFUSER OR PUMP

For measuring in tanks and underground mines or finding leaks, choosing an external pump with a 30m hose is the best solution. Once the measuring device is inserted, the pump will operate automatically. Switching from diffusion to pump operation is quick and easy by hand without the need for any tools.

POWER SUPPLY

The Dräger X-am 5000 can be operated with alkaline or NiMH rechargeable batteries. With such a reliable power source, the device can be used for more than 12 hours, and with a high-capacity battery, it can be used for more than 13 hours. Depending on requirements, the battery is charged in the factory or in the vehicle. Operating time without Ex sensor is typically more than 250 hours.



Dräger X-am® 5000
Efficient maintenance and easy-to-understand equipment management with a selection of Dräger X-dock test and calibration equipment

Dräger X-am®5000
Flexibility with external pump when measuring clearances

Dräger X-am®5000
Secure personal protection when entering confined spaces.

ACCOMPANYING EQUIPMENT



The full face mask Dräger FPS 7000 has an outstanding fit. The ergonomic head harness and the double sealing line ensure a secure and comfortable fit on all face shapes and contours. The head harness of the Dräger FPS 7000 also ensures that the mask can be donned and doffed easily and quickly



The Dräger PSS 5000 has been designed to be not only comfortable but also extremely stable during use in harsh firefighting environments. Incorporating a rigid harness connection to a fixed-height back plate, advanced harness materials and a pivoting waist belt, the Dräger PSS 5000 remains in position regardless of the task in hand.



Designed using leading technology and advanced materials, you can use our Dräger cylinders in any application where breathing protection is needed. We offer you a broad range, from carbon composite to steel cylinders. You especially benefit from their lightweight and Non-Limited Life (NLL) performance

FULL FACE MASK

Model: FPS 7000

Manufacturer: Dräger

The Dräger FPS® 7000 full-face mask series sets new standards in terms of safety and wearing comfort. Thanks to its enhanced ergonomics and the availability of multiple sizes, it offers a large, optimized field of vision and a very comfortable, secure fit.

The full face

- Mask body: EPDM natural rubber material
- Inside the mask: Natural rubber
- Face shield: Made from Polycarbonate plastic
- Mask straps: 5 points, wide contact surface at the back of the head
- Weight: 600 g
- Standard: EN 136 Class 3, EN 137 type 2A-TEX 1/MII II GD T6 (from -30° to +60°); NIOSH

Belt set

- The harness set has padded shoulder straps and easy-to-adjust snaps
- Bracket: Hollow frame, lightweight and antistatic
- Input pressure: 0 - 300 bar
- First stage output pressure: 7.5 bar
- First stage output flow: 1000 liters/minute
- LDV output flow: 400 liters/minute
- Warning horn activation pressure: 50 - 60 bar
- Warning sound: >90dBA



Compressed Air Breathing Cylinders

- Material: Composite
- Capacity: 6.8 liters
- Maximum pressure resistance of breathing air cylinder: 900 bar
- Nominal usage time: 36 minutes
- Operating time: 46 minutes
- Weight: 4.09 kg
- Durability: 20 years
- Standard: EN12245: 2002

- Equipment includes: Air pipe system, manometer and pressure regulator valve capable of maintaining appropriate input pressure for the user
- Dimensions (L x W x H): 590x290x160 mm
- Weight of stand and strap: 2.7 kg

ACCOMPANYING EQUIPMENT

LED HAND LAMP



Explosion-proof LED working- and emergency power lamp with high-power rechargeable battery. In a set with charging station and other accessories.

- LED hand lamp, rechargeable, explosion-proof
- EX SLE 16 LED: with focus lens for wide headlight range
- Lamp head, rotatable
- Dust- and splash water proof plastic housing
- Protection category IP64
- Emergency power function, in case of electrical power outage
- High-quality, low-maintenance lead-gel accu
- Inclusive charging station suitable for wall mounting



LED

180
Lumen



230V
24V
12V

IP64

MADE IN
GERMANY

Specifications

| | |
|--|--|
| Model | ACCULUX EX SLE 16 LED |
| Manufacturer | ACCULUX |
| Body | Impact-resistant plastic |
| Main lamp | POWER LED and Focus Lens |
| Luminous flux | 180 lm |
| Lighting distance | 170 meters |
| Pilot lamp | LED 5 mm |
| Lighting time of main bulb | 5h |
| Pilot lamp illumination time | 85h |
| Battery | 4V/3.5 Ah lead gel battery, rechargeable |
| Moving angle of the lamp head | Tilt front and back from 20° to 90° |
| Protection | IP64 |
| Weight | 1,1 kg |
| Dimensions (excluding charger)(Width x Height x Thickness) | 104 x 245 x 72 mm |
| Usable flash zone level (ATEX standard) | 1, 2, 21 and 22 |
| Standard | TUV-A 07 ATEX 0001X |



ACCOMPANYING EQUIPMENT

LIFTING

Model: Lukas H2

Manufacturer: Lukas

The lifting is an indispensable part of your equipment. With the lifting jack, you can lift and push objects and obstacles to create space for the entrance.



- 1 set includes lifting, hand pump and footplate, foot lifter, wedge pieces, Extensions, etc.
- Lightweight metal carrying case
- Weight: 51 kg

Lifting

| Technical Data | |
|-----------------------|-------------------|
| Type | Hydraulic lifting |
| Length | 305mm |
| Lifting force | Up to 137 kN |
| Stroke | 150mm |
| Operating pressure | 700 bar |
| Operating temperature | -20 to +55°C |
| Standard | DIN 14800 |

Handpump

| Technical Data | |
|----------------|---------------------|
| Dimensions | 655 x 200 x 1160 mm |
| Capacity | 2,4 l |
| Oil volume | 1,8 l |



Prim

Industrieservice GmbH

Prim Industrieservice GmbH

Weststr. 32

D 44866 Bochum

Tel: +49 2327 3755300

Email: info@prim-industrieservice.de